



# MONTHLY MEMBERSHIP PROGRESS REPORT

District 27 A2

Results as of: 6/30/2015

GMT: Judy Hankom

LOCATION WISCONSIN

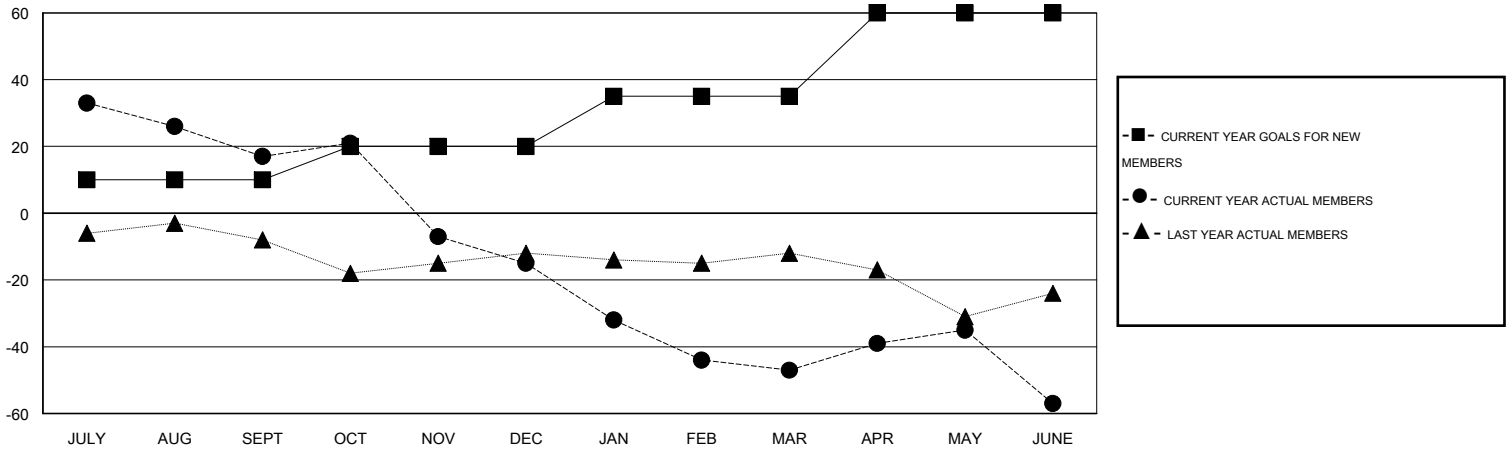
GMT CA 1

Clubs					Members				
RESULTS FOR 2014-2015					RESULTS FOR 2014-2015				
QUARTER	NEW CLUB GOAL	NEW CLUBS	DROPPED CLUBS	NET GAIN/LOSS	QUARTER	NEW MEMBER GOAL	CHARTER AND NEW MEMBERS ADDED	DROPPED MEMBERS	NET GAIN/LOSS
JULY/AUG/SEPT	0	0	1	-1	JULY/AUG/SEPT	10	59	42	17
OCT/NOV/DEC	0	0	1	-1	OCT/NOV/DEC	10	28	60	-32
JAN/FEB/MAR	0	0	0	0	JAN/FEB/MAR	15	19	51	-32
APR/MAY/JUNE	1	0	0	0	APR/MAY/JUNE	25	32	42	-10

GOALS AND ACTUAL NEW CLUBS CUMULATIVE



GOALS AND ACTUAL MEMBERS CUMULATIVE



DROPPED CLUBS: 2	38 CLUBS OF 47 ADDED 1 OR MORE NEW MEMBERS	<u>GENDER DISTRIBUTION</u>	
		MALE	1,365 (84.78%)
<u>DROPPED MEMBERS</u>	<a href="#">CLICK HERE FOR HEALTH ASSESSMENT DATA</a>	FEMALE	245 (15.22%)
DECEASED		12	FAMILY UNIT MEMBERS
CLUB CANCELLED	7	HEAD OF HOUSEHOLD	83
OTHER	176	NON-HEAD OF HOUSEHOLD	83
<b>TOTAL</b>	<b>195</b>		